



Vicksburg, Mississippi

River Access: Reconnecting people with the river

La'Kasha, Tanisha, Xihan & MaFe

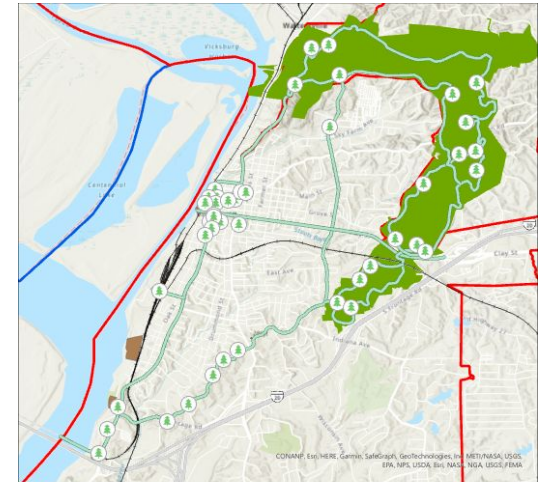
Key proposals

The Necklace of Vicksburg

- The Multi-use trail connecting museums, parks, riverfront access areas and hilltop viewpoints.

In response to key challenges including: erosion, funding, public access, natural disasters, the proposal seeks to:

1. Integrate multiple stakeholders
2. Enhance mobility and transportation connectivity of different means
3. Utilize the rich cultural and historical heritages



Content

1. Study area
2. Preliminary ideas
3. Field trip
 - a. Challenges
 - b. Opportunities
4. Group approach
5. Proposal
6. Conclusions

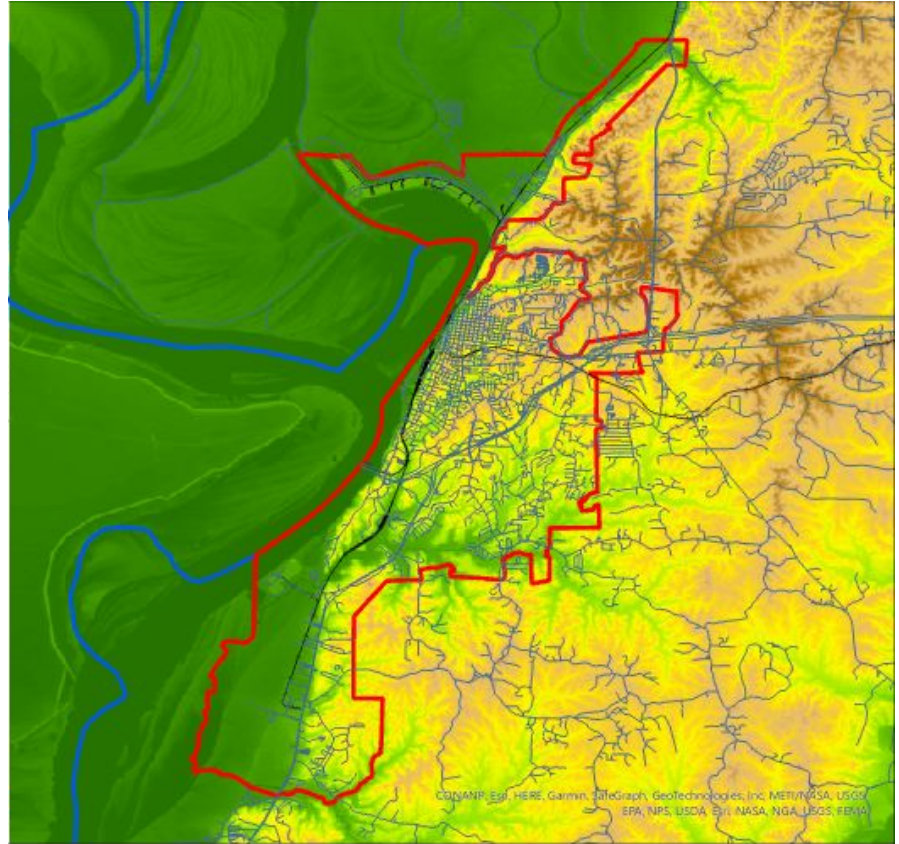
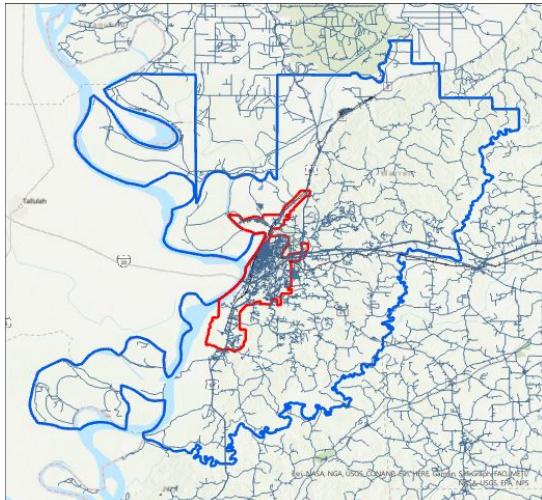
1. Study area

Elevation: 240'

Area: 35.09 mi²

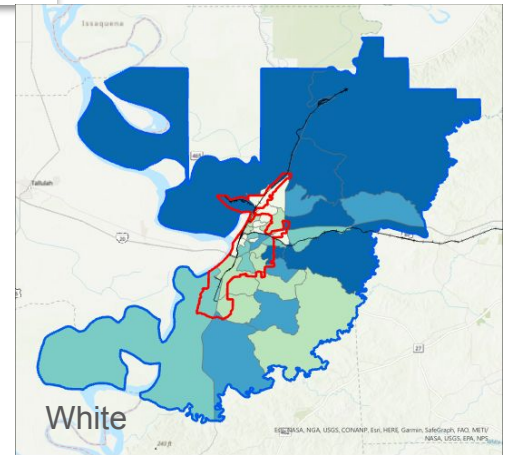
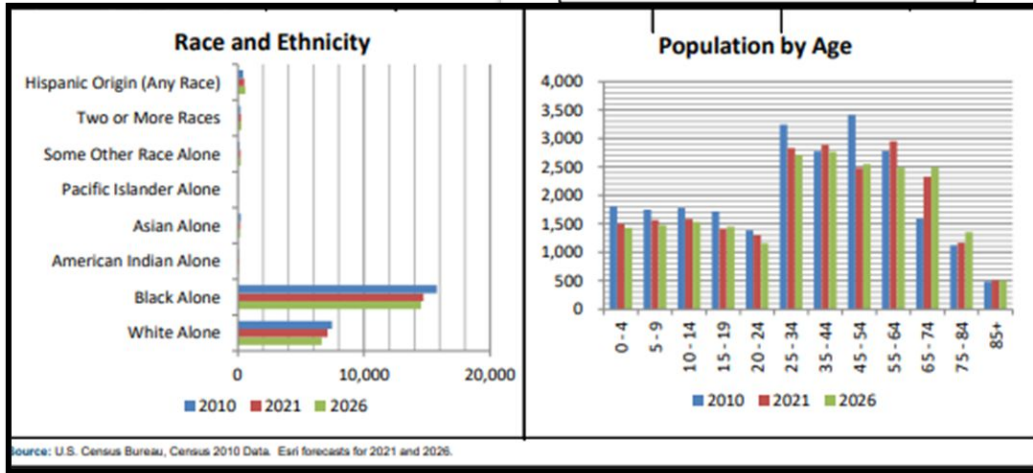
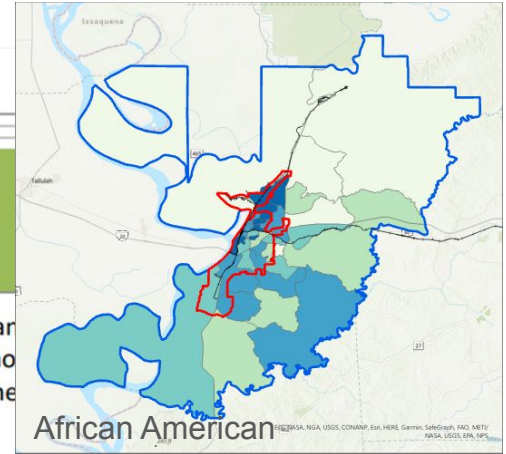
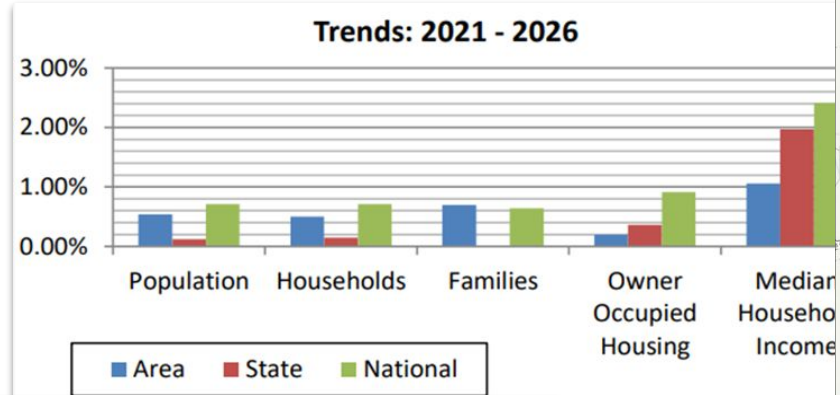
City Population: 21, 567 (2022)

Warren County Population: 43, 912 (2022)



1. Study area

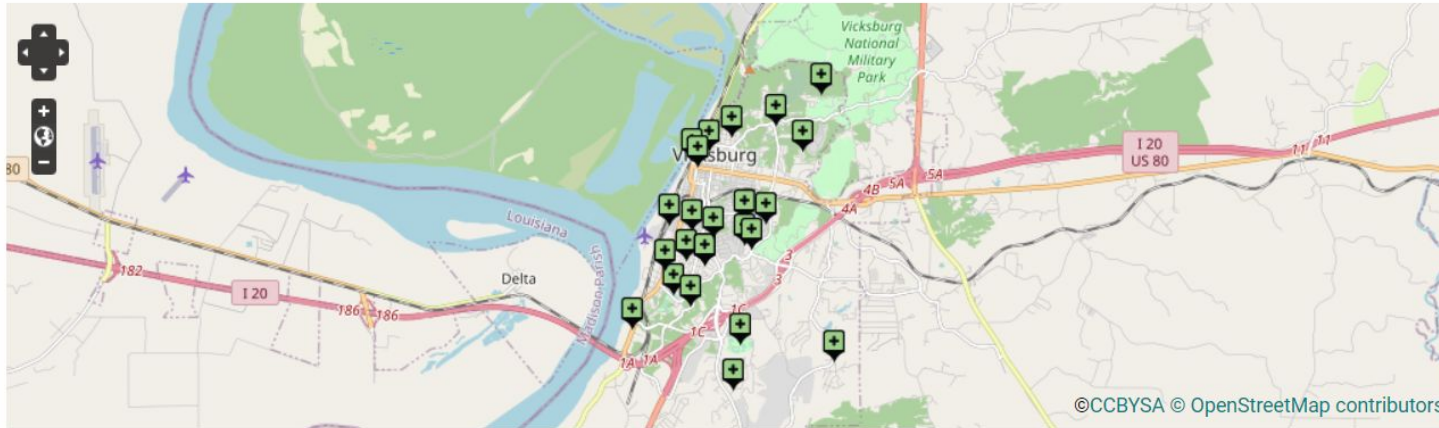
Demographics



1. Study area

Public open spaces in the metropolitan area own by the city

Parks and Rec Facilities



First Avenue Park

Fayette & Farmer Park

Marian Lane Park

Glenwood Circle Park

Ken Karyl Park

Fuzzy Johnson Park

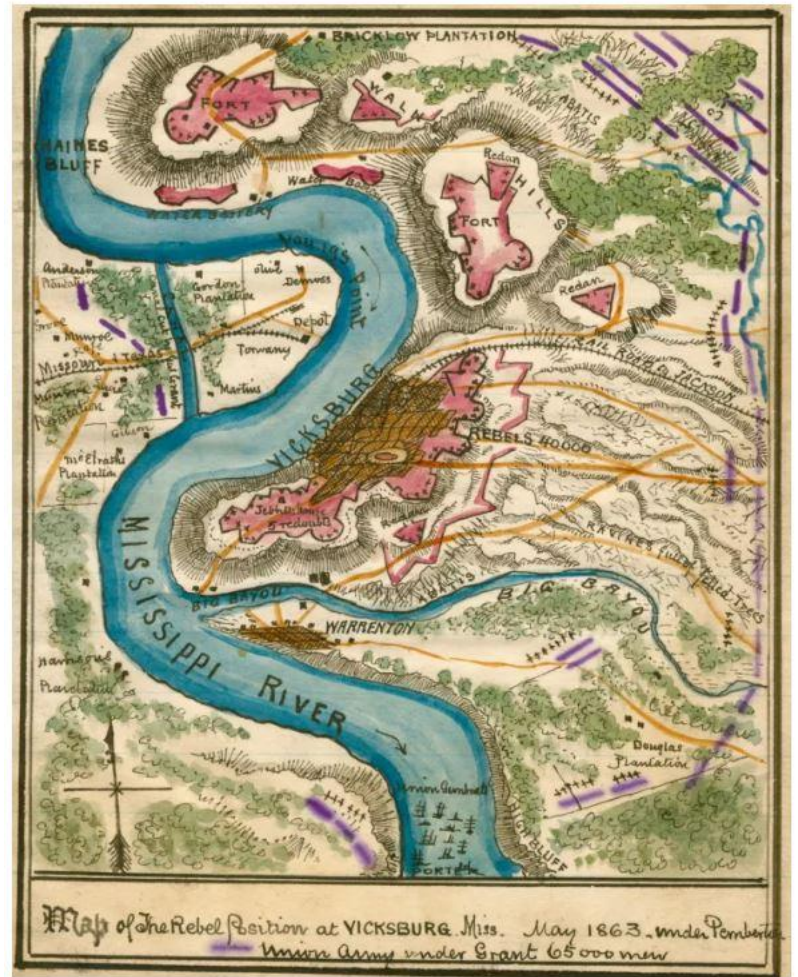
Lake & Dewitt Park

Letitia & Valley Park

River Front Park

1. Study area

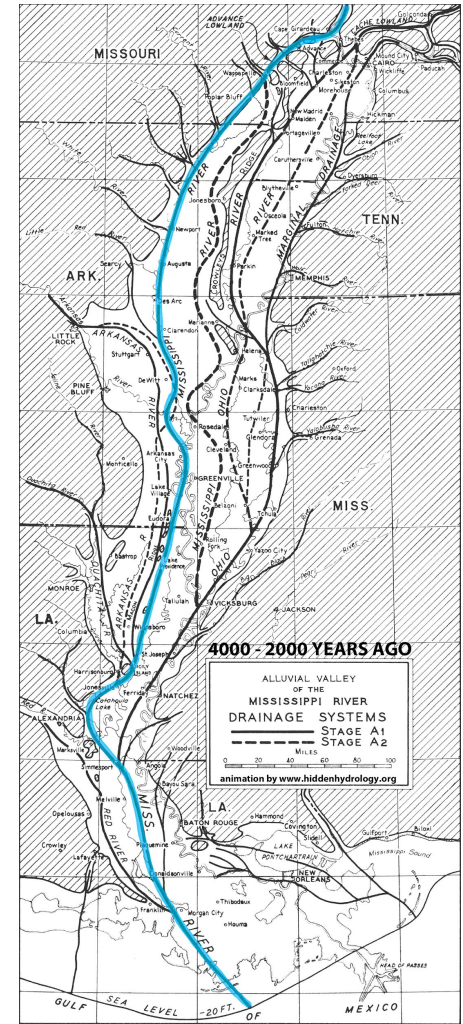
History: Battle of Vicksburg 1863



Terrain and Confederate fortifications around Vicksburg. Indicated are the locations of Union forces under Sherman, McPherson, McClelland and Carr.

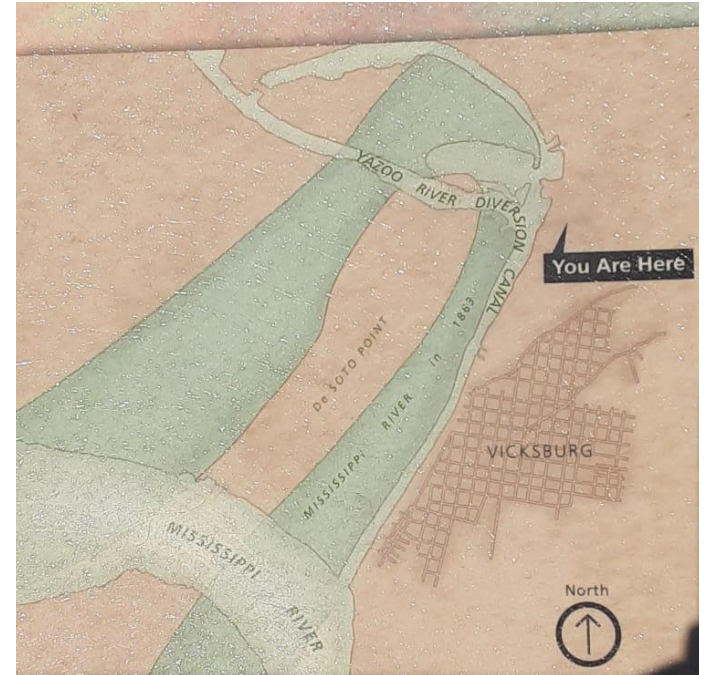
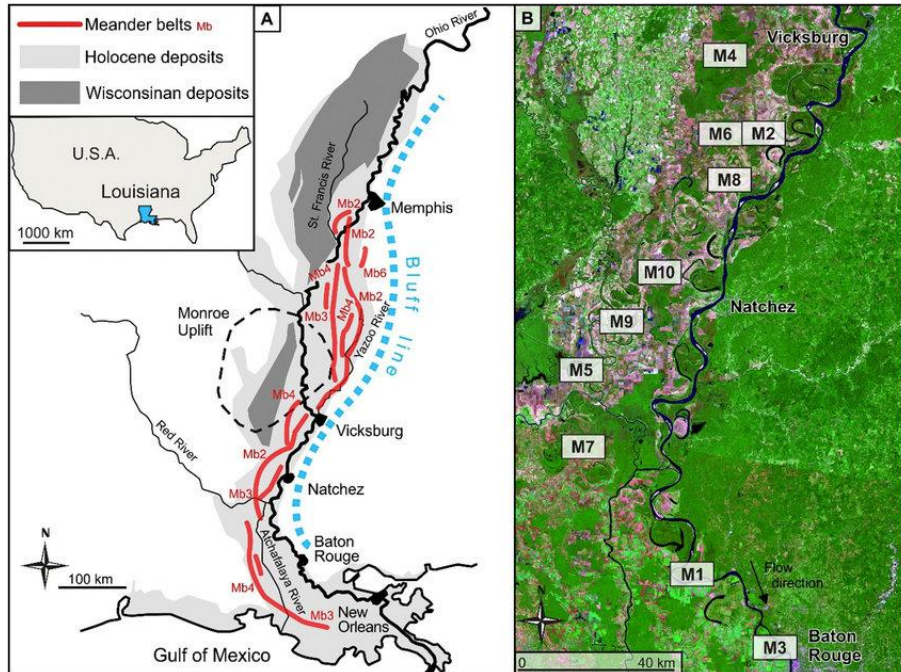
1. Study area

History: Mississippi river meanders



1. Study area

History: Mississippi river meanders



2. Preliminary ideas

Goal: access to the waterfront, connection with Yazoo and Mississippi rivers in Vicksburg



2. Preliminary ideas

Data to be collected:

Data Source:

Warren County: <https://webapp.agdmaps.com/webappbuilder/apps/45/>

GIS maps (County boundary, City boundary, DEM, Road network, Parks, Railways):
https://drive.google.com/drive/folders/1ep-cBAupjN_rc_dY0sFSDYtdwuocTmZD?usp=sharing

Tanisha was/is working there in Vicksburg.

Design a path similar to Freedom Trail Freedom Trail

3. Field trip



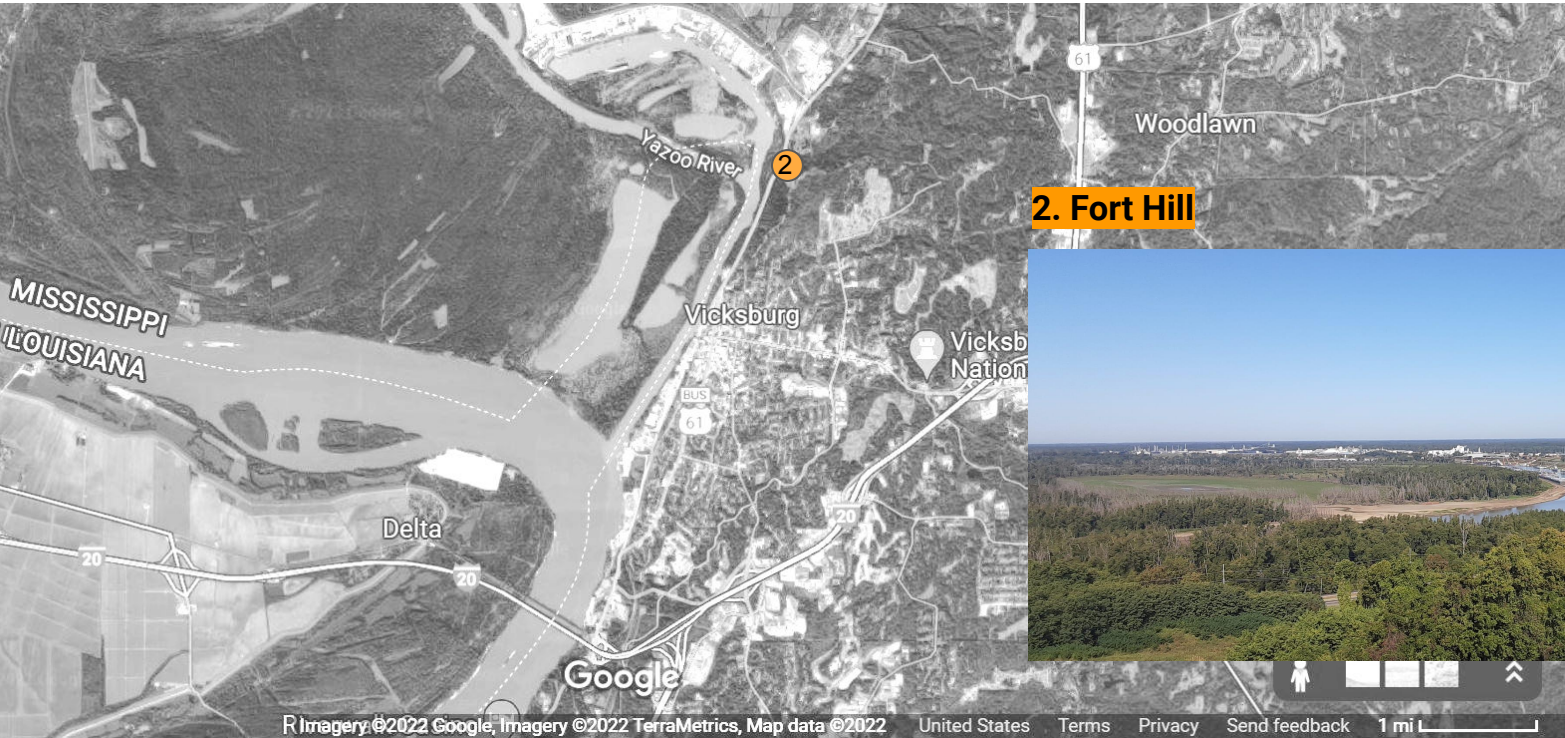
3. Field trip



1. City Front Boat Ramp



3. Field trip



3. Field trip



3. Field trip



4. Old Riverfront Park



3. Field trip



5. New Riverfront Park



3. Field trip



3. Field trip



3a. Challenges

Erosion



Mississippi riverfront park needs expensive erosion repairs

October 3, 2021



Click to copy

RELATED TOPICS

Mississippi
Mississippi River
Vicksburg
Erosion

VICKSBURG, Miss. (AP) — A park next to the Mississippi River in Vicksburg remains closed indefinitely because erosion has created the need for expensive repairs.

The city of Vicksburg and Warren County own part of Riverfront Park and split the cost of maintenance and repair, the Vicksburg Post reported. The governments lease part of the land from the family that owns Vicksburg Printing and Publishing Co.

The park has been closed since April 2020 because heavy rains caused landslides that made the area unsafe.

The estimate to fix the eroded areas is \$664,585, and the work has been approved for grants from the Federal Emergency Management Agency and the Mississippi Emergency Management Agency. Those would cover 75% of eligible project costs. For the FEMA grant, the city would have to pay for work and then seek reimbursement.

Mayor George Flagg Jr. said Thursday the potential cost of repairs and other possible work on park facilities may be too much for the city and county to bear. Flagg said restrooms may need to be moved and the park's road may need to be rerouted.

Flagg said the city and county have spent more than \$ 1 million on Riverfront Park since 2008.

"You can't keep dropping money in the hole," he said. "The river is unstable and it's unremitting."

3a. Challenges

Funding

- Limited funding sources for the Vicksburg Bridge Commission
- Ongoing costly repairs to the Riverfront Park



3a. Challenges

Access/transportation

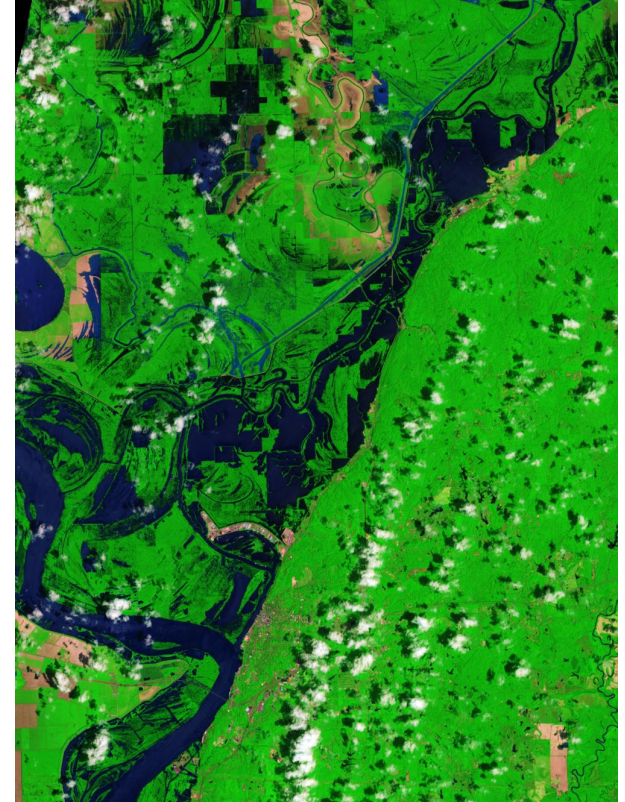
- No bicycle friendly infrastructure
- Not walkable
- Limited alternate modes of transportation



3a. Challenges

Flooding

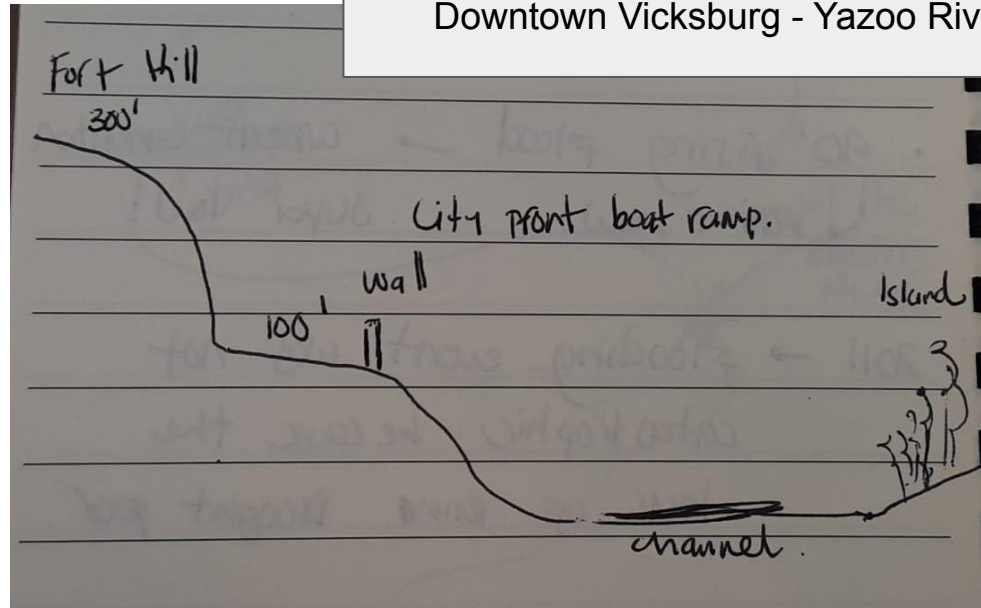
- The Great Flood of 2011 was the most recent extreme flooding event: the flood crest reached 57.1 ft on May 18.
- May 9th, the flow of the river past Vicksburg reached over 2 million cubic feet per second.
- In the spring of 2018, the Mississippi River crested at 55.8 feet, less than two feet from the historic flood of 2011.
- Seasonal flooding is expected every year, but it varies greatly depending on the timing and quantity of snow melt and heavy rain events.
- The man-made concrete levee in downtown Vicksburg helps to keep the flooding waters out of the town, and contain murals of the local history.



3a. Challenges

Flooding

Downtown Vicksburg - Yazoo River



3a. Challenges

Homelessness

- Needs more shelter and/or preventative programs
- Pipeline programs to alleviate the homelessness as a whole
- Set community specific goals

3a. Challenges

Homelessness

Homelessness Statistics for **Mississippi**

Total Homeless Population	1,107
Total Family Households Experiencing Homelessness	76
Veterans Experiencing Homelessness	68
Persons Experiencing Chronic Homelessness	146
Unaccompanied Young Adults (Aged 18-24) Experiencing Homelessness	51
<hr/>	
Total Number of Homeless Students	7,003
Total Number of Unaccompanied Homeless Students	332
Nighttime Residence: Unsheltered	129
Nighttime Residence: Shelters	249
Nighttime Residence: Hotels/motels	263
Nighttime Residence: Doubled up	6,362

3a. Challenges

Vicksburg Poverty Rates

Name	Total	In Poverty ▼	Poverty Rate
Black	15,083	6,253	41.46%
White	5,450	416	7.63%
Hispanic	647	175	27.05%
Multiple	485	141	29.07%
Other		124	NaN%
Asian	66	11	16.67%

3a. Challenges

Safetiness

3b. Opportunities

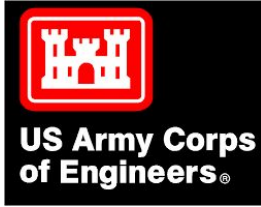
Partnership among very different stakeholders

Government agencies

Private agencies

Non-profit organizations

Regional



The Friends of the Vicksburg Bridge

National



United Way of West Central Mississippi

Local

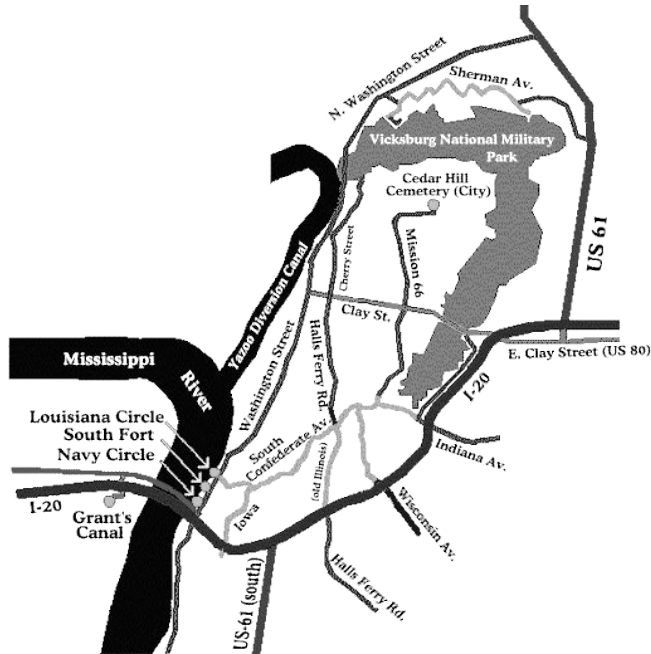


Public

3b. Opportunities | Stakeholders

National Park Services

National Military park + Cedar Hill Cemetery + Louisiana Circle + South Fort + Navy Circle



Ownership and maintenance of 5 public open spaces in Vicksburg

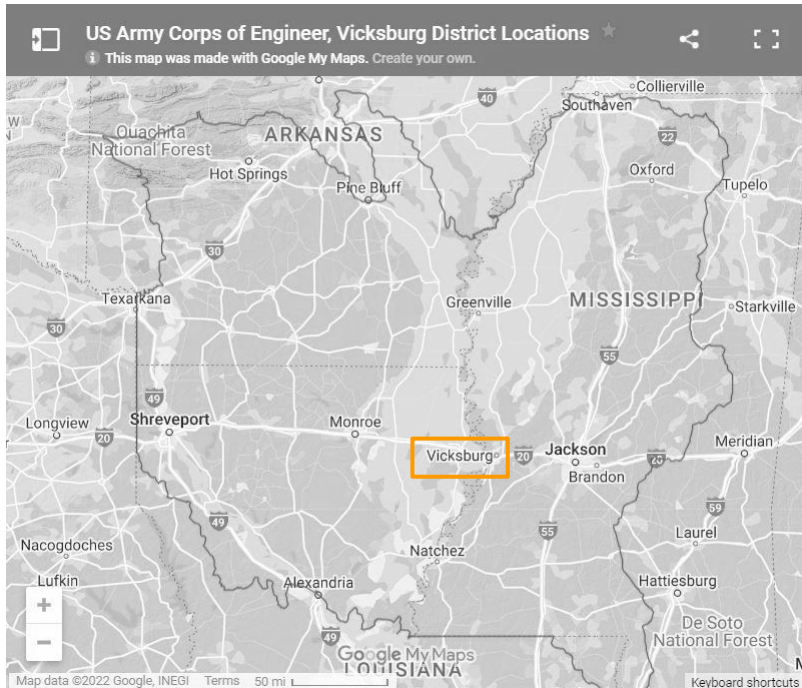
Some sites are closed to the public due to erosion:
Louisiana Circle

Used to own the area around the Confederate Avenue

No direct access to the riverfront but overview of the river

3b. Opportunities | Stakeholders

US Army Corps of Engineers



The Corps balances the reasonably foreseeable benefits and detriments of proposed projects, and makes permit decisions that recognize the essential values of the Nation's aquatic ecosystems to the general public, as well as the property rights of private citizens who want to use their land.

The Vicksburg District Regulatory team works daily to assure that the Nation's aquatic resources are protected while allowing reasonable development through fair, flexible, and balanced permit decisions.

The Vicksburg District Regulatory Program annually receives over 1,500 requests for pre-application meetings, permits, authorizations, wetland delineations, jurisdictional determinations, and enforcement actions.

Not direct access to the riverfront

3b. Opportunities | Stakeholders

City of Vicksburg

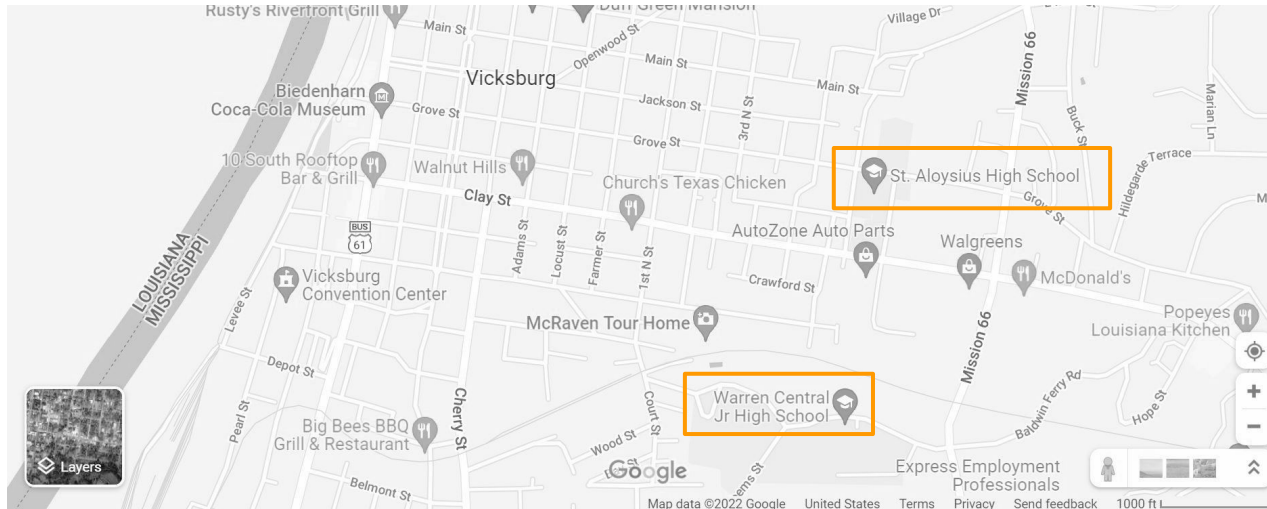


Ownership and maintenance of City Front Boat Ramp, Riverfront park (old and new)

Direct access to the riverfront on the Yazoo and the Mississippi

3b. Opportunities | Stakeholders

Middle & high schools



Environmental education about the river!

Engagement

Perception of the river as more than a transportation freeway

No direct access to the riverfront

3b. Opportunities | Stakeholders



United Way
of West Central Mississippi

Kansas City Southern Lines



Maintenance of the Old Vicksburg Bridge

Permit to pedestrian and bike access

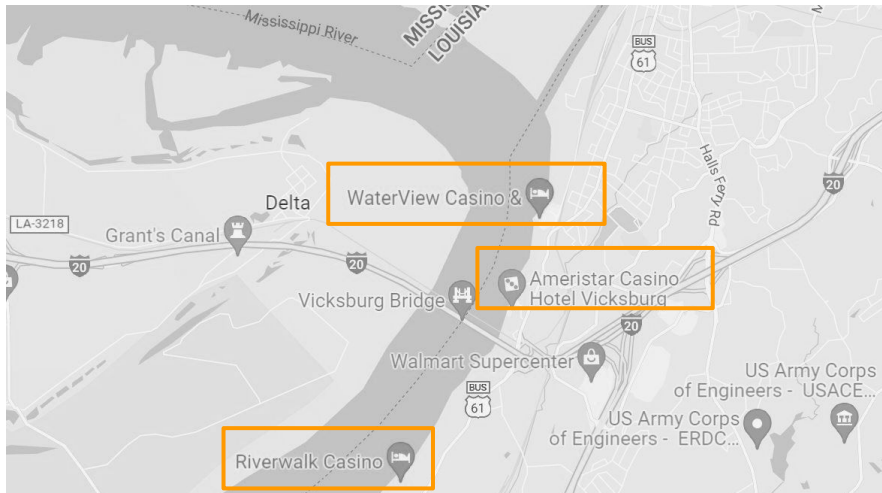
**No direct access to the waterfront but
overview of the river**



3b. Opportunities | Stakeholders

Casinos

Ameristars + Cedar Hill Cemetery + Louisiana Circle + South Fort + Navy Circle



Ownership of most of the waterfront on the Mississippi river

Direct access to the riverfront although disconnected by walls

3b. Opportunities | Stakeholders

The Friends of the Vicksburg Bridge

Started 1 petition

Petitioning Warren County Board of Supervisors, Friends of the Vicksburg E

Vote YES to Open the Old Vicksburg MS Bridge to Pedestrians Full-time

The Friends of The Old MS River Bridge requested the Warren County Board of Supervisors to adopt a resolution regarding the Old MS River Bridge on Monday, April 23rd at 8:30am at their offices at... [Learn more](#)



Friends of the Vicksburg Bridge



 1,514 supporters

Mission: promote community, health & wellness, history, economic development, and tourism of the Mississippi River, Vicksburg, Warren County, and the entire State of Mississippi by reopening the Old Highway 80 Bridge to pedestrians and bicycle traffic full-time.

3b. Opportunities | Stakeholders

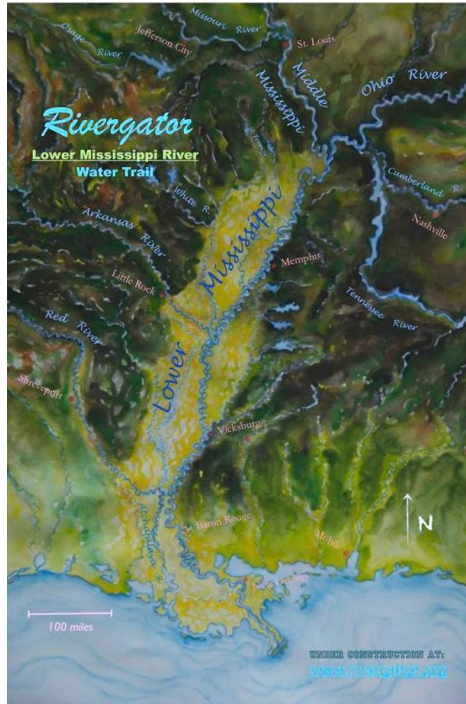
Mississippi's Lower Delta Partnership



Mission: To conserve the communities and habitat in Mississippi's Lower Delta by encouraging environmental stewardship and economic growth through educational programs; the promotion of tourism, local businesses, and recreational opportunities; and supporting policies that advance our mission.

3b. Opportunities | Stakeholders

Quapaw Canoe Canopy



Experience moving along the raw, wild, power and vitality of the Lower Mississippi River by canoe. Paddlers experience towering bluffs, endless forests, expansive sandbars, and the muddy river.

Environmental education about the river!

Direct access to the the Mississippi

3b. Opportunities | Partnerships

Public



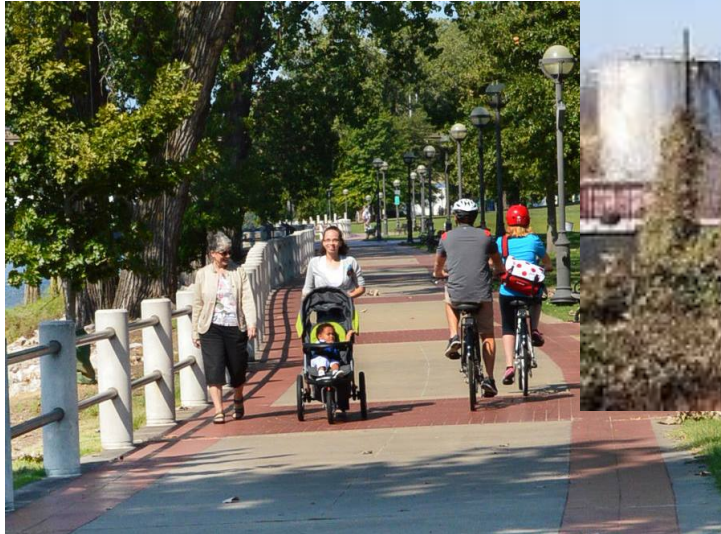
<https://www.vicksburgpost.com/2015/04/13/downtown-transforms-for-riverfest/>

<https://www.change.org/p/warren-county-board-of-supervisors-vote-yes-to-open-the-old-vicksburg-ms-bridge-to-pedestrians-full-time>

3b. Opportunities

Mobility/transportation connectivity

- Multi-modal Integration
- Walking Trails
- Micro-transit



- **Goal:** To incorporate alternate transportation elements into developments and transportation plans initiated by private developers and Vicksburg.

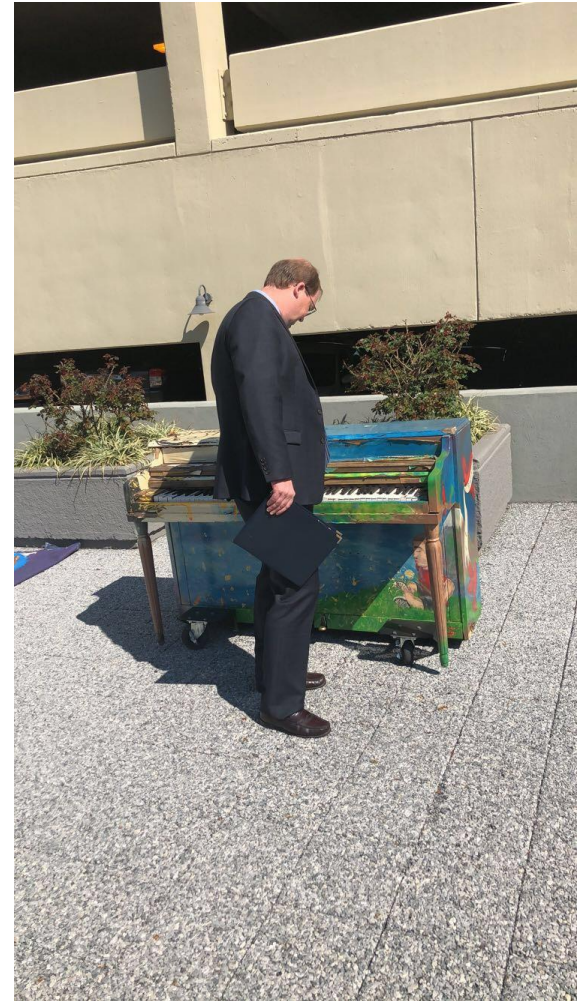
Objective: To plan transportation corridors with elements that facilitate pedestrian circulation through green belts containing bicycle lanes, and walking trails that connect to adjacent residential/commercial areas.”

Objective: To designate Vicksburg as a bicycle-friendly community.

3b. Opportunities

Public Art

- Murals
- Sculptures
- Festivals
- Landscape architectural



3b. Opportunities

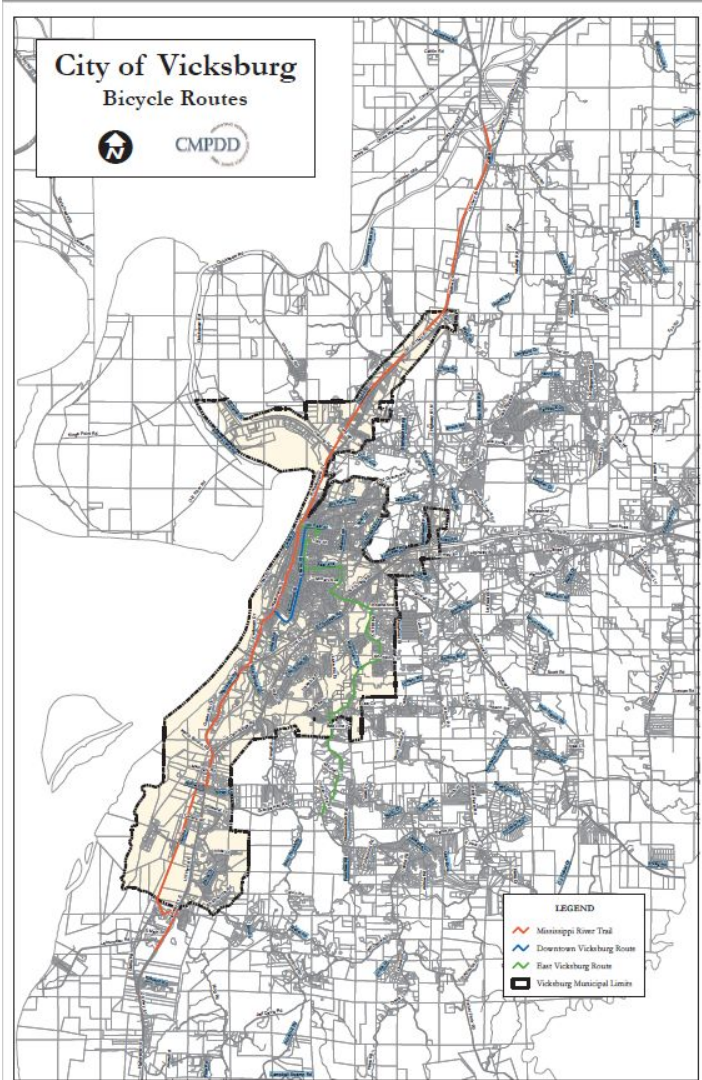
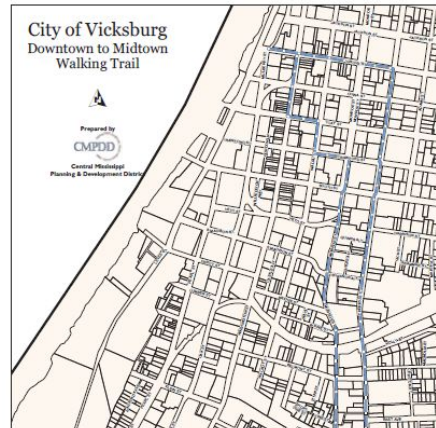
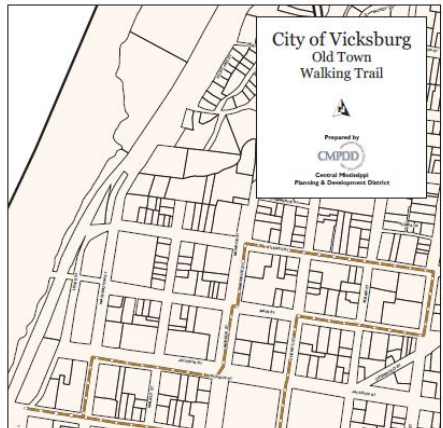
Environmental/history education



<https://visitvicksburg.com/vicksburg-national-military-park>

3b. Opportunities

City government, comprehensive planning



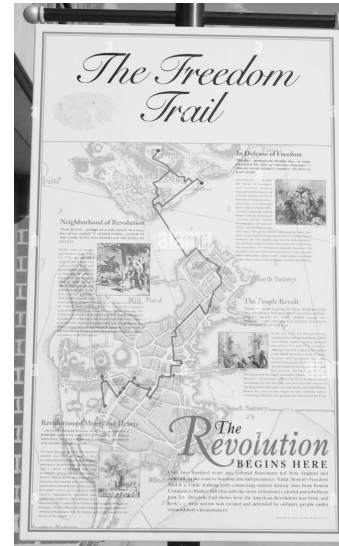
4. Group approach

- a. Fix the thing that are already in Vicksburg
 - i. Inclusive projects
 - ii. Stakeholders
 - iii. Best practices
- b. New long-lasting partnerships with stakeholders and community members
- c. Connectivity between public open spaces
- d. Connection people-river: visual and physical
- e. Offer options for different users:
 - i. Views of the mississippi, paddling options for the most adventurous.
 - ii. bike/pedestrian/bus/car
 - iii. Recreation + history + ecology + art

5. Proposal

Multi-use trail connecting museums, parks, riverfront access areas and hilltop viewpoints.

- Design a path similar to Emerald Necklace or Freedom Trail Freedom Trail
- Circuit idea
- Connectivity



Freedom Trail Freedom Trail

5. Proposal

Natchez Trace National Parkway

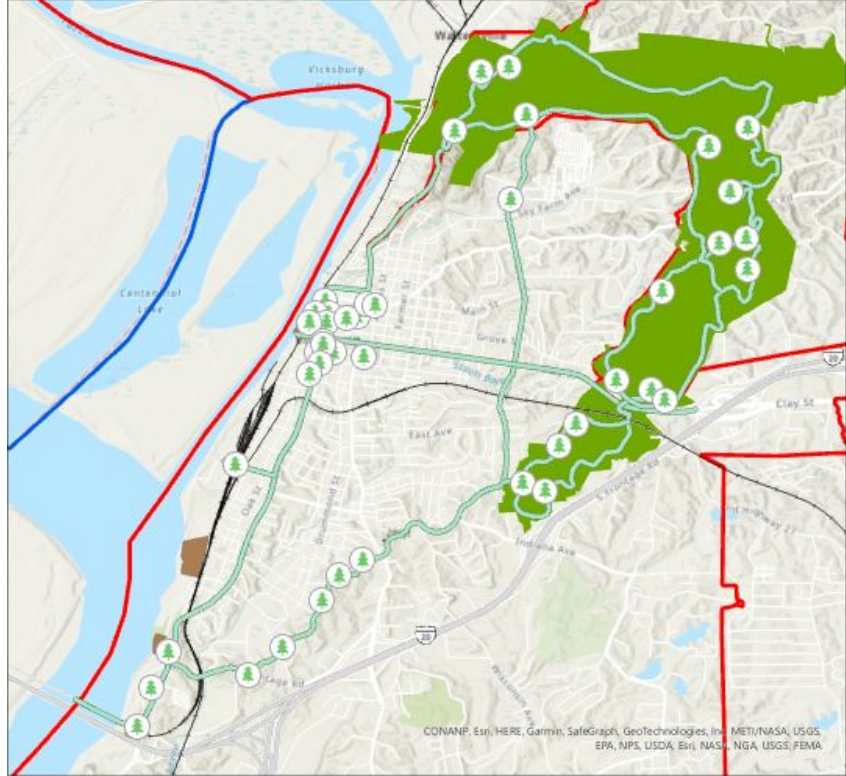


5. Proposal: The Mississippi trail

The Necklace of Vicksburg



<https://www.lmrcc.org/outdoor-recreation/bicycling/>



Vicksburg and Warren County, MS



0 0.26 0.51 1.02 1.53 2.04 Miles

Xihan YAO
2022/10/15
Source: USGS

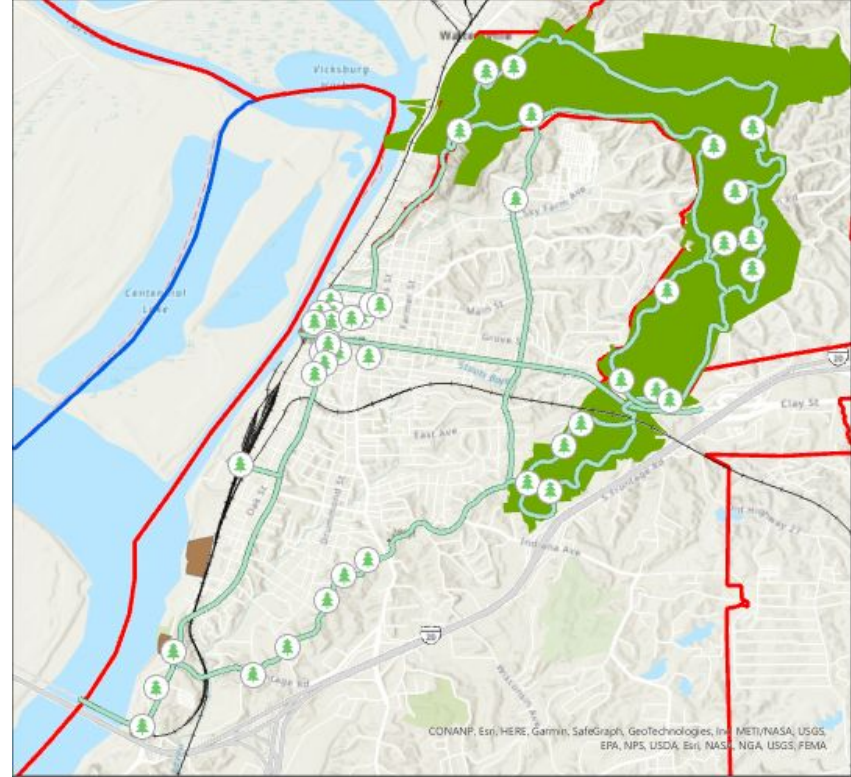
Legend

- OtherPOI
- Necklace
- Rail
- POI
- NPS
- Vicksburg

5. Proposal: The Mississippi trail

The Necklace of Vicksburg:
Integrating National Military Park, Washington Street,
Clay Street, Confederal Avenue to connect attractions
and balance the city development

River accessibility:
Riverfront parks, boat launching, Fairground St Bridge
Passing



Vicksburg and Warren County, MS



0 0.26 0.51 1.02 1.53 2.04 Miles

Xihan YAO
2022/10/15
Source: USGS

Legend

- OtherPOI
- Necklace
- Rail
- POI
- NPS
- Vicksburg

5. Proposal: The Mississippi trail



6. Conclusions

- a. Connecting trail is already in the mind of Vicksburg City - Community Development
- b. The challenge is to get the permits and have all the stakeholders involved: their missions are very different, so they do not necessarily need to work together.
- c. Safeties: other challenges in Vicksburg need to be addressed
- d. The proposal of the Mississippi River trail would offer opportunities to connect people to the river physically by observing the river by high viewpoints (bridge, top hill, new riverfront park) or accessing the waterfront (casinos?, Quapaw' expertise). It would also include different options of transportation, connect with other public spaces along the river and offer environmental education programs/features to learn about and engage with the river.